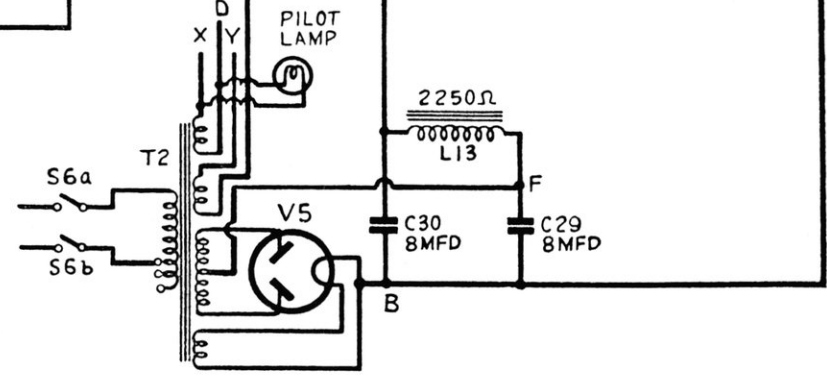


FIG. I.

Values and Functions of Components not given in the Diagram

CONDENSERS		INDUCTANCES		TRANSFORMERS		
No.	CAPACITY	No.	D.C. RESISTANCE	No. & MODEL	WINDING	RESISTANCE
C0	2 μf.	L0	0.25 Ω	T2	PRIMARY	200.214v. 24 Ω
C1A	.0005 μf.	L1	1.0 Ω			215.232v. 26 Ω
C1B	.0005 μf.	L2	7.0 Ω			233.250v. 29 Ω
C1C	.0005 μf.	L3	5.0 Ω	T2	H.T. Sec.	255-255 Ω
C2	10/50 μμf.	L4	12.0 Ω			100.108v. 5.5 Ω
C3	10/80 μμf.	L5	2.75 Ω			109.120v. 6.0 Ω
C4	10/50 μμf.	L6	0.75 Ω	T2	PRIMARY	255-255 Ω
C5	10/80 μμf.	L7	5.0 Ω			200.214v. 36 Ω
C6	10/50 μμf.	L8	12.0 Ω			215.232v. 39 Ω
C7	10/80 μμf.	L9	1.0 Ω	T2	H.T. Sec.	233.250v. 43 Ω
C15	70/140 μμf.	L10	2.5 Ω			398-398 Ω
C16	70/140 μμf.	L11	4.0 Ω			T1
C17	70/140 μμf.	L12	8.0 Ω	SECONDARY	0.25 Ω	
C18	70/140 μμf.	L13	2400 Ω	L.S.	SPEECH COIL	2 Ω
		L15	40 Ω			
		L16	40 Ω			
		L17	40 Ω			
		L18	40 Ω			



ALL RESISTANCE VALUES ARE IN OHMS AND CONDENSER VALUES ARE IN MICROFARADS UNLESS OTHERWISE STATED. BLOCK LETTERS, A.B.C., Etc., REFER TO THE POSITION OF SOLDER TAGS IN CONDENSER BLOCK W.2030.