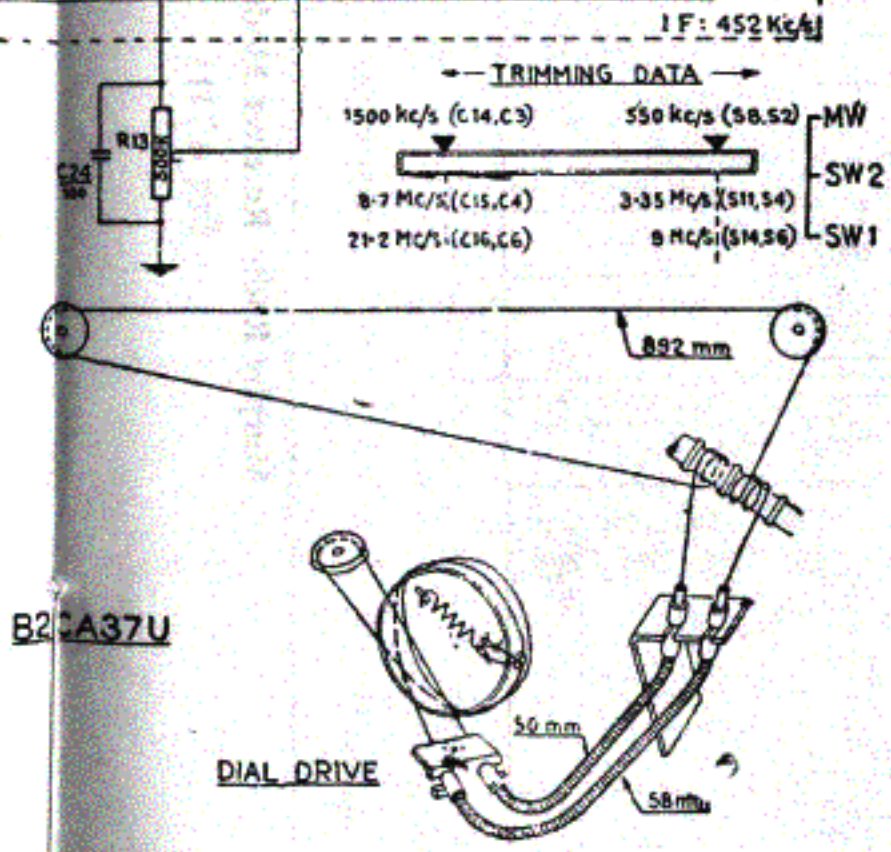


- (1) Wave ranges  
 MW : 184M - 587. M  
 (1635-512Kc/S)  
 SW2 : 31.9-96. 1 m  
 ( 9.4-3.1 Mc/s )  
 SW1 : 13.5-35.3 M  
 (22.2-8.5 Mc/s)
- (2) Power Consumption  
 45 watts approx.  
 at 230 Volts.
- (3) Trimming the Receiver

Set the volume Control to maximum. Connect an output meter across the loudspeaker terminals through a trimming transformer. Work with the lowest possible signal level before trimming R. F. Coils. Check the setting of the thermometer tuner, the right hand edge of which should be adjusted against the centre line of the dial with tuning Capacitor at minimum capacity position.



चित्र नं. 110

- (4) I. F. Alignment : Switch on the receiver to MW band with tuning capacitor at minimum Capacity position Unscrew the I. F. Cores out as far as possible to begin with. Apply a signal of 452 Kc/s to the grid g1 of Valve UCH 81 through a capacitor of 33000 PF. & successively trim S18, S17, S15 & S16 for output maximum.
- (5) R. F. Circuit : Apply signal to antenna socket via dummy aerial & proceed trimming for maximum output at points 2 & 1 for each Range starting with MW as given in the trimming data.